

HOW TO SUBMIT A SAMPLE

- 1 PATIENTS SHOULD BE FASTED
- 2 DRAW DOWN 2-5 ML OF BLOOD
- 3 IMMEDIATELY FILL K2-EDTA TUBE
- 4 SPIN THE SAMPLE IN-HOUSE
- 5 REMOVE PLASMA
- 6 SHIP ON ICE (0-4°C) TO THE LAB

SAMPLE ACQUISITION AND PROCESSING

1. **NOTE:** A minimum of 4-hour fast prior to sampling is recommended
2. Draw at least 2 mL of whole blood from a peripheral or jugular vein
3. Immediately fill the blood into a K2-EDTA tube (do not use K3-EDTA)
4. Within one hour of collection, centrifuge sample at 1600xg (the “blood” spin) for 10 minutes.

5. After centrifugation, carefully remove at least 1 mL of plasma and transfer to non-additive tube (i.e. Eppendorf tube)

NOTE: Please be careful not to disrupt the buffy coat while aspirating the plasma (Fig. 1)

6. Immediate shipping recommended, proceed to next steps.
 - If the sample will not be shipped immediately, store at 0-4°C until ready to pack and ship.
 - Do not store samples for >2 days prior to shipping, as this can alter test results.

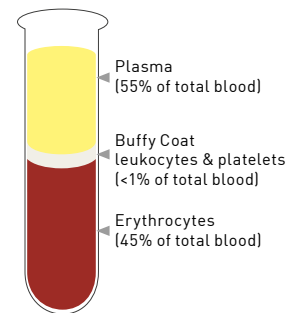


Fig.1

SHIPPING

Pack the sample with ice/ice pack (0-4°C) and ship immediately, do not freeze the sample

SAMPLE SUBMISSION FAQs

What if I let the sample sit for more than 60 minutes before spinning?

This may falsely increase the nucleosome levels in the sample. Please consider redrawing a new sample, centrifuging, within 60 minutes of blood draw, at 1600xg for 10 minutes, and promptly analyzing or transferring the plasma to a clean tube as outlined above.

Can I use serum instead of plasma?

No. K2-EDTA Plasma is the only approved sample type for the Nu.Q[®] test. Serum, lithium heparin (LiHep) plasma, and other forms of anticoagulated plasma are not approved sample types and will provide inaccurate results.

What if my sample is hemolyzed after centrifugation?

Mild or moderate hemolysis will not interfere with the Nu.Q[®] test. However, if your sample has 3+ or higher hemolysis consider redrawing a new sample to minimize any potential interference.

QUESTIONS?
cancertest@scilvet.com
Contact our team!