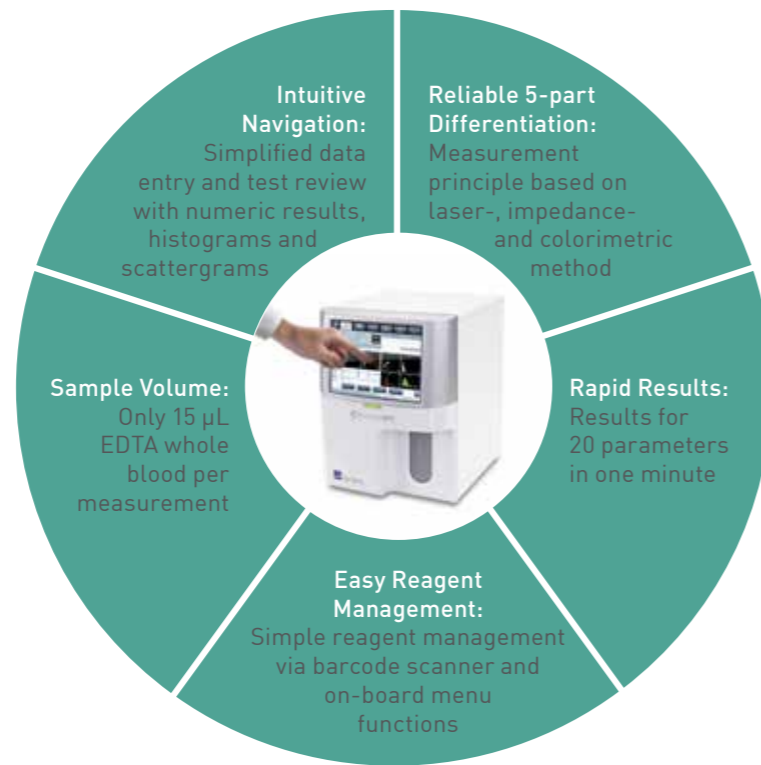


**TAKE HOME MESSAGE**



# Element HT5

## VETERINARY HEMATOLOGY ANALYZER

### PRODUCT BROCHURE

## Element HT5

Parameter	WBC, RBC, PLT, HGB, MPV, HCT, MCV, MCH, MCHC, RDW-CV, NEU#, NEU%, LYM#, LYM%, MON#, MON%, EOS#, EOS%, BAS#, BAS%
Species	Dog, Cat, Rabbit, Ferret, Horse, Cattle, Pig, Goat, Sheep, Llama, Mouse, Rat, Monkey, Giant Panda, Red Panda
Histogram	RBC / PLT / WBC
Scattergram	WBC
Sample type	EDTA Whole Blood
Sample volume	15 µL
Measurement time	60 Seconds
Measurement principle	RBC and PLT: electrical impedance method HGB: colorimetric method WBC: laser flow cytometry
Interface	4 x USB, 1 x Ethernet, bidirectional transmission
Dimensions	435 x 325 x 410 mm (H/B/T)
Weight	25 kg
Display	Touchscreen Display



Your contact person

# Accurate results in just one minute



**1** Enter patient data



**2** Aspirate sample



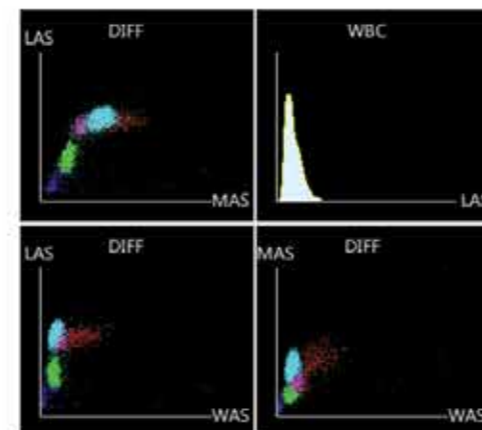
**3** Read results

The Element HT5 determines a hematological blood count with 20 parameters in less than one minute.

The accurate results of the sample measurement are displayed in a WBC scattergram and RBC/PLT histograms. The Element HT5 hematology system combines three measurement methods for reliable results:

- the laser flow cytometry for the detection of lymphocytes, monocytes, neutrophils and basophils
- the impedance method for detection of red blood cells and platelets
- the colorimetric method for the HGB detection.

Scattergrams & Histograms



## Element HT5 – your hematology system for daily use

To determine a blood count, the Element HT5 takes only 15 µL EDTA whole blood. The small sample volume proves to be a practical advantage, especially for small patients.

Analyzing a sample is facilitated by clear instructions on the large touch-screen display. The menu is intuitive and the different functions can be easily assessed on the screen.

The Element HT5 optimizes the work flow in your practice by offering a bi-directional data transmission. You can easily send a lab request from the examination room directly to the Element HT5. After the analysis, the Element HT5 will send the patient results directly back to your desk.



RBC / PLT Histograms

